



Enigma 3.1™

Physical key protecting your invaluable data.



Achieved FIPS 140-2 Level 2 Certification



With NIST/CSE certified hardware AES ECB/CBC engine up to 256-bit strength

Designed for



Personal

Lightweight but powerful. Only ONE KEY protect everything.



Enterprise

Leading technologies & Data Protection Optimization.



Executives

A comprehensive and real-time protection for your cloud/drive data.



IT

A customized protection providing the best security solution.

What is Enigma 3.1 CloudKey™?

X-Wall MX+ FIPS 140-2 Level 2

Utilize X-Wall MX+ FIPS 140-2 Level 2 certified single chip cryptographic module.

Hardware Based

Hardware based authentication & AES ECB/XTS/CBC 256-bit data encryption.

USB 3.1 10 Gbps Speed

Operates at USB 3.1 10 Gbps speed.

NAS & Cloud Drives

Encrypt data in place by selecting file/folder on any computer detectable storage drives, including NAS & cloud drives.

Physical Key

You own the physical key and no one else has it.



GLBA



California, USA SB1386 for privacy data protection

Japan, Republic of China and other countries' data privacy protection law

All other trademarks and copyrights are the property of their respective owners.

CONTACT US

+886 3 577 2767

info@enovatech.com



www.enovatech.com

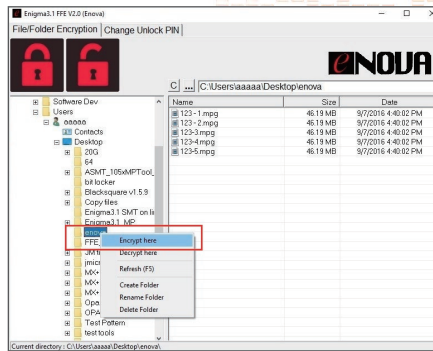
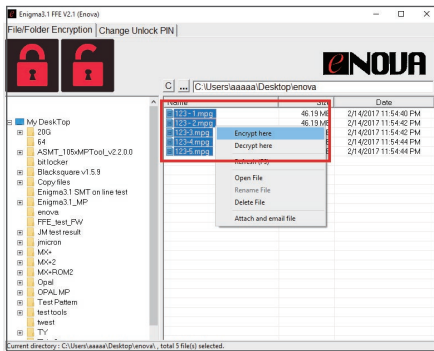


HOW TO USE

Operating File(s) or Folder Encryption by Right-Clicking

- 1 Choose a **file** on the right plane (or use **Shift** or **Ctrl** key to choose multiple files) then right-click to select "Encrypt Here" to encrypt.
- 2 Choose a **folder** on the left plane to select "Encrypt here".
- 3 To decrypt, select encrypted file/folder then right-click to select "Decrypt here".

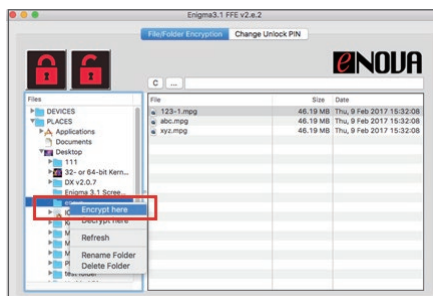
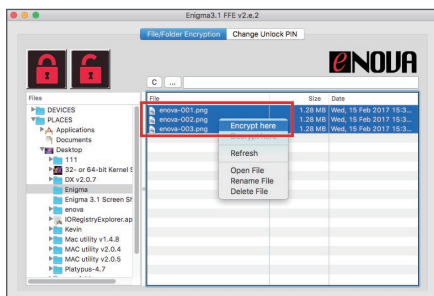
Intuitive UI for  Windows



Operating File(s) or Folder Encryption by Right-Clicking

- 1 Choose a **file** on the right plane (or use **Shift** or **Command** key to choose multiple files) then right-click to select "Encrypt Here" to encrypt.
- 2 Choose a **folder** on the left plane to select "Encrypt here".
- 3 To decrypt, select encrypted file/folder then right-click to select "Decrypt here".

Intuitive UI for  MacOS



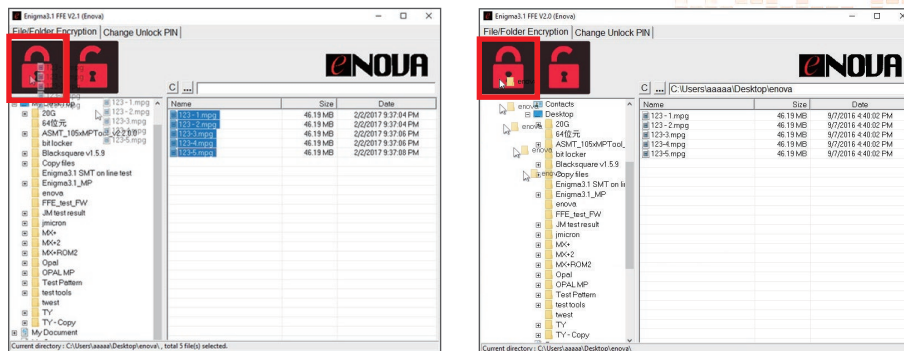


HOW TO USE

Operating File(s) or Folder Encryption by Drag & Drop

- 1 Choose a **file** on the right plane (or use **Shift** or **Ctrl** key to choose multiple files) then drag & drop to the "Encrypt Icon" to encrypt.
- 2 Choose a **folder** on the left planet then drag & drop to the "Encrypt Icon" to encrypt.
- 3 To decrypt, select encrypted file/folder then drag & drop to the "Decrypt Icon".

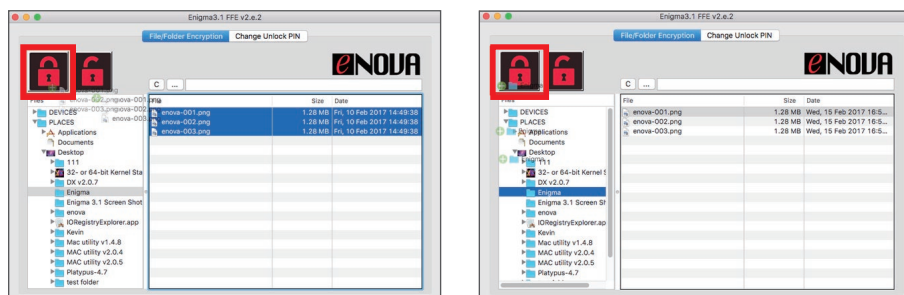
Intuitive UI for  Windows



Operating File(s) or Folder Encryption by Drag & Drop

- 1 Choose a **file** on the right plane (or use **Shift** or **Command** key to choose multiple files) then drag & drop to the "Encrypt Icon" to encrypt.
- 2 Choose a **folder** on the left plane then drag & drop to the "Encrypt Icon" to encrypt.
- 3 To decrypt, select encrypted file/folder then drag & drop to the "Decrypt Icon".

Intuitive UI for  MacOS



Overview

On-chip HMAC (key-hashed message authentication code) authentication and real-time AES hardware engine ensure safety of your invaluable data.

System Solutions Protect Key Communications & Cloud Operation

Group users benefit from Enova's advance PKC (public key cryptography) server that streamlines authentication protocol through built-in RSA2048 engine.

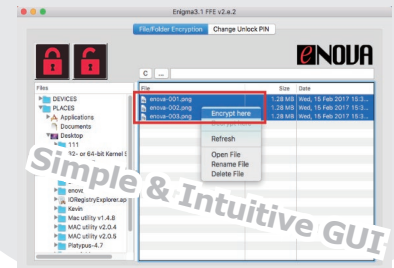
SYSTEM SOLUTION

FIPS 140-2 hardware end point protection



Secure Authentication through network

Key Server
for remote security policy management






Model (SKU)

model (SKU)	AES mode	strength	system
EMA-MX+E-6W	ECB	256 bits	Windows
EMA-MX+C-6W	CBC	256 bits	Windows
EMA-MX+E-6W	ECB	256 bits	Windows & Mac
EMA-MX+C-6W	CBC	256 bits	Windows & Mac



Specification

Model	Enigma 3.1 CloudKey
Form Factor	USB dongle
Secure Data	Data-In-Motion (File/Folder Encryption)
Encryption Method	Encrypts selective file/folder of host detectable storage drives¹.
Interface	USB 3.1 (Compatible with USB 1.0/1.1/2.0/3.0)
Crypto Processor	X-Wall MX+
AES Mode of Operation	ECB/CBC
Encryption Strength	256-bit
Supported OS for Login	 Windows (Supports up to Windows 7, 8, 8.1, 10 Professional & Enterprise 32/64-bit versions)  Mac OS (Supports up to MAC OS X 10.12; MAC support is optional)
2 Factor Authentication	Yes
Certification	 NIST CES CE FC
Dimension (mm)	61.43mm (L) x 19.61mm (W) x 10.11mm (H)
Weight	10.5g

¹. Selective files/folders of any detectable storage drives, including such as UFD, USB or 1394 drives, NAS, iCloud, Dropbox, OneDrive and Google Drive.